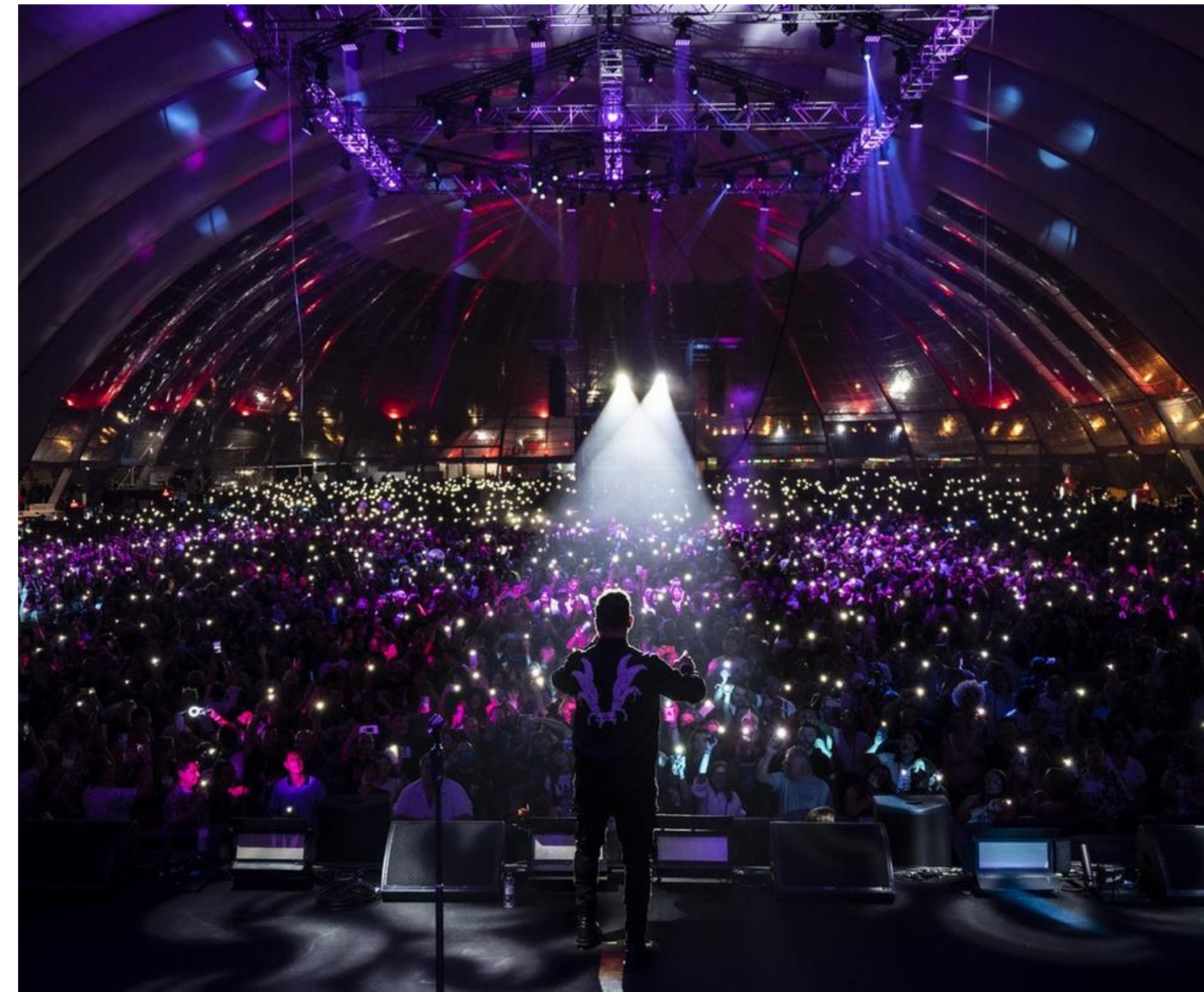


PRESENTATION 2023 - PARTNERS SUMMIT

IRMARFER

REVOLUTIONIZING THE INDUSTRY

→ NEW SOLUTIONS AND PRODUCTS



INNOVATION AND DEVELOPMENT

IRMARFER is constantly innovating and developing new solutions and products that push the boundaries of what is possible in the construction and engineering industries.

These solutions are aimed at meeting the evolving needs of IRMARFER's clients, and they represent some of the most forward-thinking and effective approaches to construction and engineering currently available.

NEW SOLUTIONS

THERMO INFLATABLE PVC ROOF STRUCTURE

AESTHETIC ENERGY-EFFICIENT SAFE

Thermo inflatable double PVC roof is a **unique solution** used to **increase energy efficiency** and **comfort** within a structure. Provides **excellent insulation**, helping to maintain a **consistent temperature** inside the structure.

The structure's **lightweight** design also allows for **easy and quick installation**, reducing labor costs and minimizing disruptions to ongoing operations.

Reduced Energy Costs and Smaller Environmental Footprint



NEW SOLUTIONS

THERMO INFLATABLE PVC ROOF STRUCTURE



NEW SOLUTIONS

ARCH TRUSS ALUMINUM STRUCTURE

LIGHTWEIGHT INNOVATIVE RESISTANT

A NEW LANDMARK IN THE MARKET

Arch truss structures represent a significant breakthrough in multi-purpose building design, offering unparalleled **stability** and **versatility** while also maintaining an **elegant design**.

It's a popular choice for large and complex structures reaching **70m free-span**.

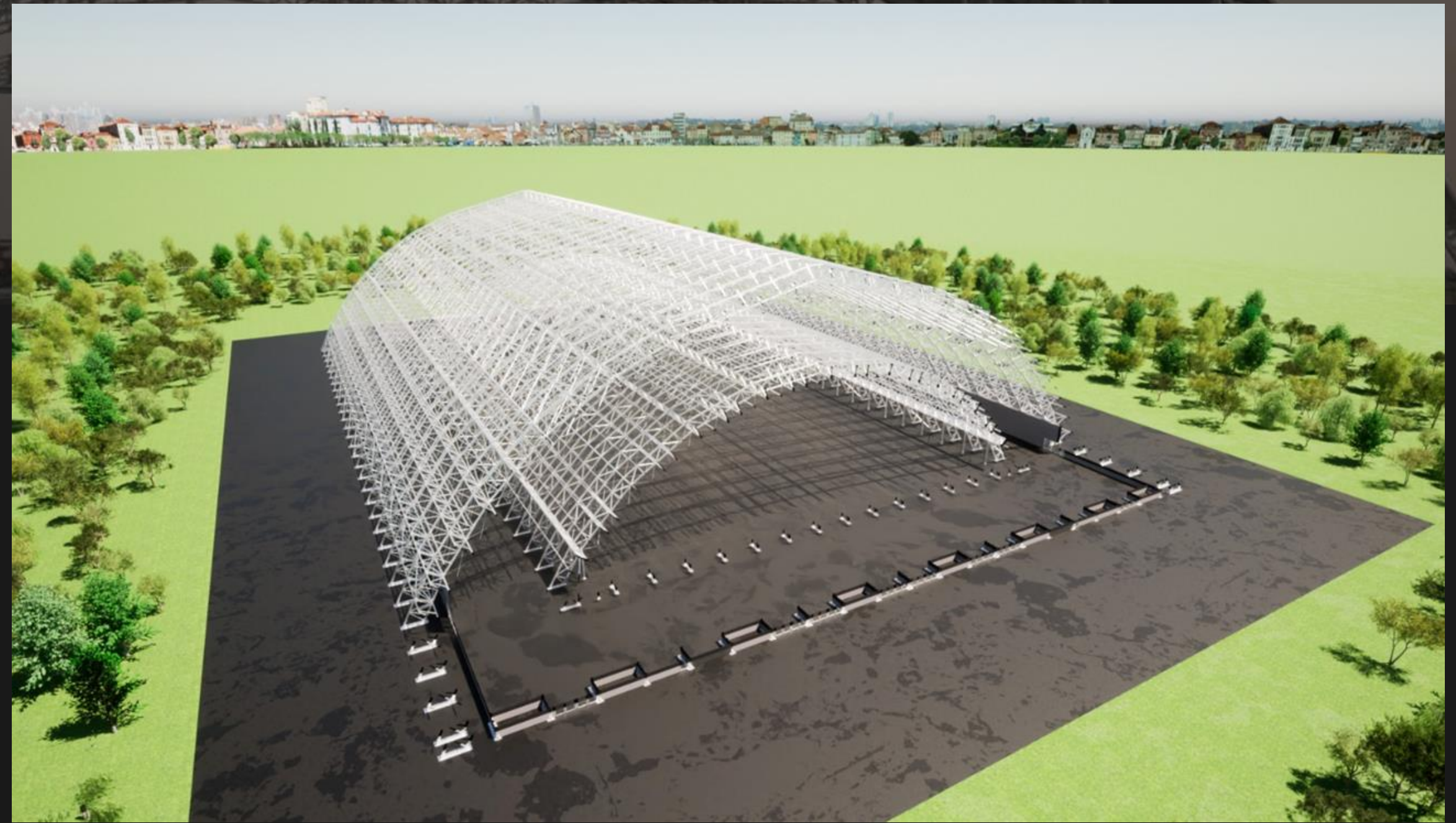
We are constantly pushing the boundaries of what is possible in this type of structures, and our latest innovation is no exception. The new arch truss, **with a clear span of 100m**, will represent a significant breakthrough in **large** and **complex structure design**.



NEW SOLUTIONS

ARCH TRUSS ALUMINUM STRUCTURE

UP TO 100M FREE-SPAN



NEW SOLUTIONS

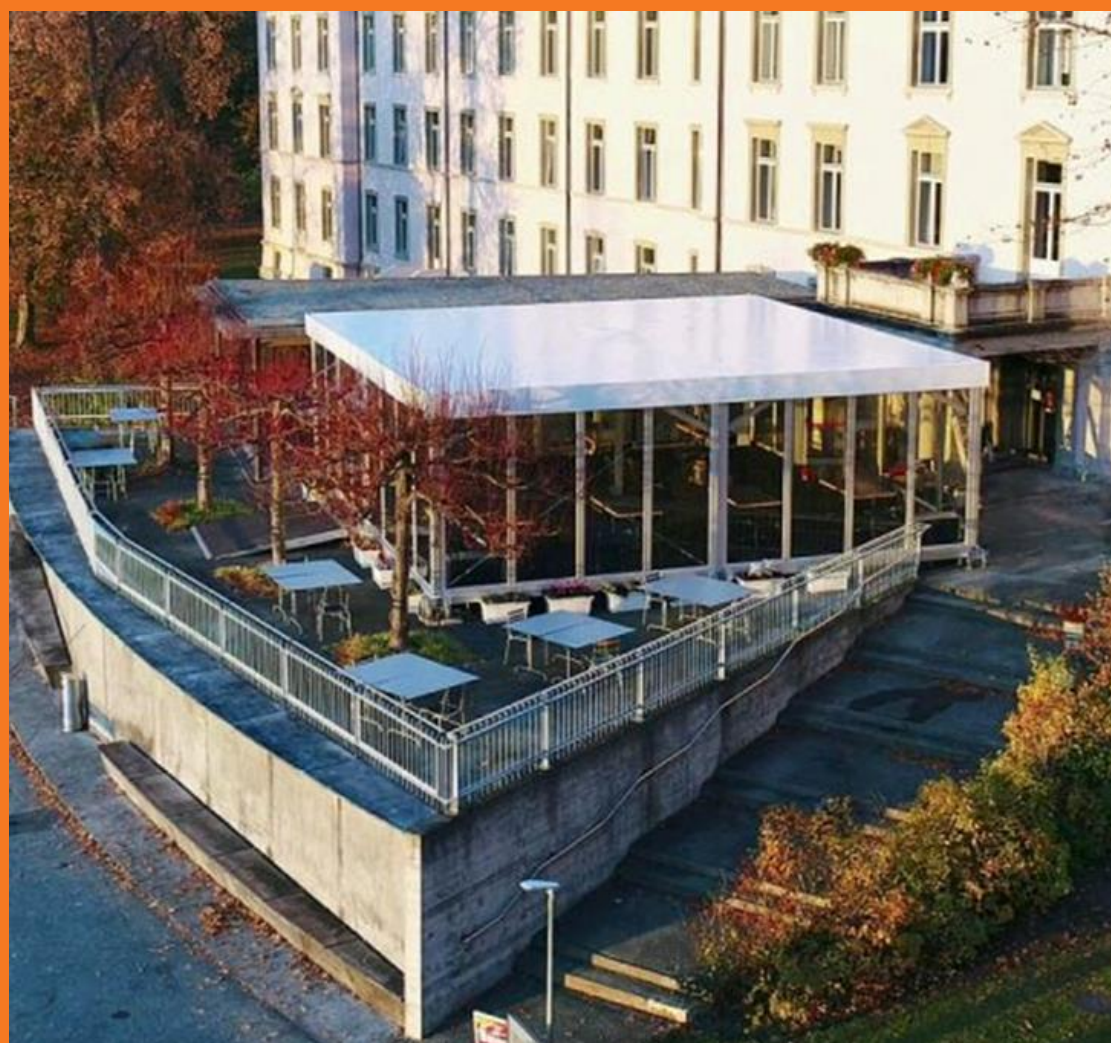
ARCH TRUSS ALUMINUM STRUCTURE



NEW SOLUTIONS

MULTI-DECK STRUCTURE

MODULAR CONSTRUCTION SYSTEM



Adjustable system in height/floor:

Double Deck

Ground Floor - 500kg/sqm

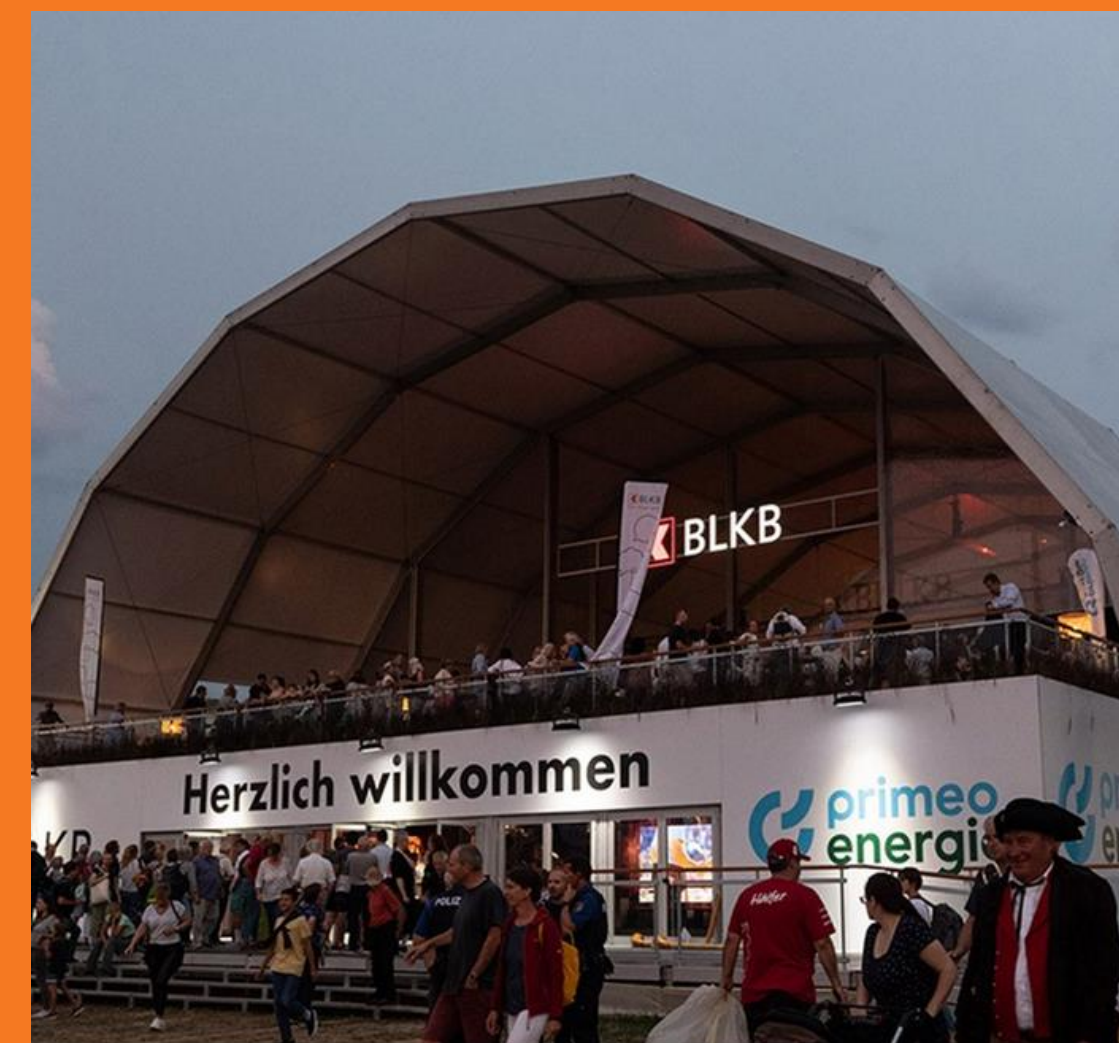
First Floor - 330kg/sqm

Triple Deck

Ground Floor - 500kg/sqm

First Floor - 330kg/sqm

Second Floor - 330kg/sqm



NEW SOLUTIONS

MULTI-DECK STRUCTURE



NEW SOLUTIONS

MULTI-PURPOSE STRUCTURES – MONO PROFILE

ALTERNATIVE TO CONVENTIONAL CONSTRUCTION

IRMARFER's engineers have designed these structures to have a lower ratio between the dead load of the structure and the supported live loads, resulting in a **lighter structure** that is **easier to install and maintain**, and a great alternative to conventional construction.

Built with the high levels of quality, safety, and sustainability. By choosing to use innovative materials and construction techniques, IRMARFER is able to deliver structures that are not only cost-effective but also **environmentally friendly**.



STRUCTURES YOU WILL VISIT

VILARINHO

Multi-purpose Support Structure

- Igloo structure (40mx70m)
- Internal structures: 1 020sqm LSF (Light Steel Framing)
- Thermal and acoustic opaque tarpaulin with 5mm
- Cold-formed steel S350GD Z275 MA
- Project implantation area: 10 600sqm
- Assembly: between 3 to 9 months

USABLE AREA: 2 500sqm



STRUCTURES YOU WILL VISIT

NASAMOTOR

Industrial Support Structure

- A-Frame structure (20mx45m)
- 40mm sandwich panel facade
- Anti-condensation lining on the roof top
- 2 sliding glass doors
- Assembly: 2 weeks, 7 assembly technicians

USABLE AREA: 800sqm



STRUCTURES YOU WILL VISIT

M. COUTINHO

Industrial Support Structure

- 2 A-Frame structures (15mx40m) twinned
- 40mm sandwich panel facade
- Partitions walls in LSF (Light Steel Framing)
- 3 shutters gates of 5m
- Assembly: 3 weeks, 5 assembly technicians

USABLE AREA: 1 000sqm



STRUCTURES YOU WILL VISIT

PADEL AGUDA

Tennis&Padel Support Structure

- A-Frame structure (24mx42m)
- 2 double doors
- Assembly: 2 weeks, 7 assembly technicians

USABLE AREA: 850sqm



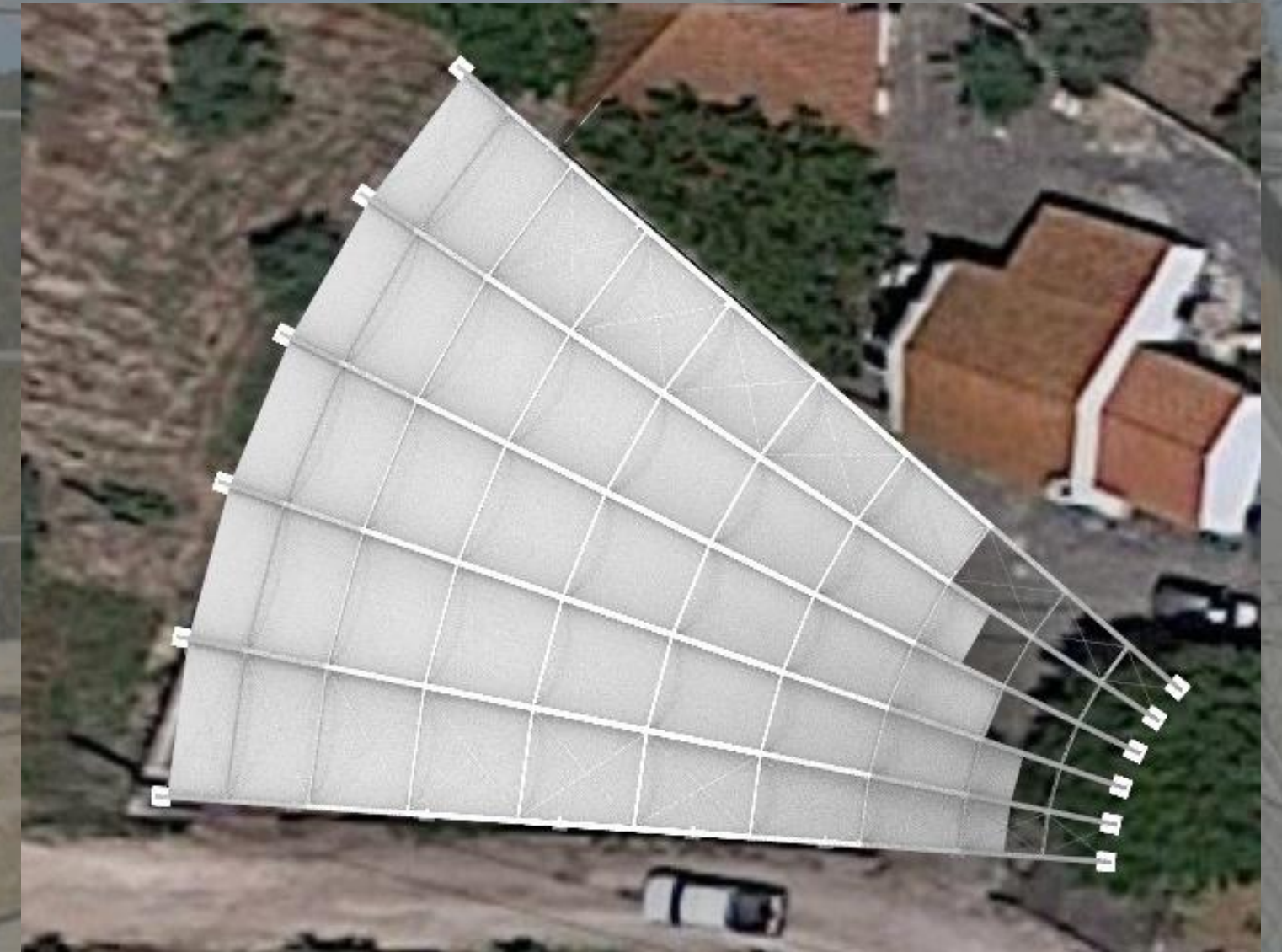
STRUCTURES YOU WILL VISIT

VILLA ROMANA DE SÃO SIMÃO

Archeology Support Structure

- 37m Wave structure (circular architectural shape)
- Innovative suspended pedestrian footbridges
- Natural ventilation systems
- 2 double doors
- Assembly: 3 weeks, 7 assembly technicians

USABLE AREA: 850sqm





IRMARFER

STRUCTURES

MAKING DREAMS COME TRUE